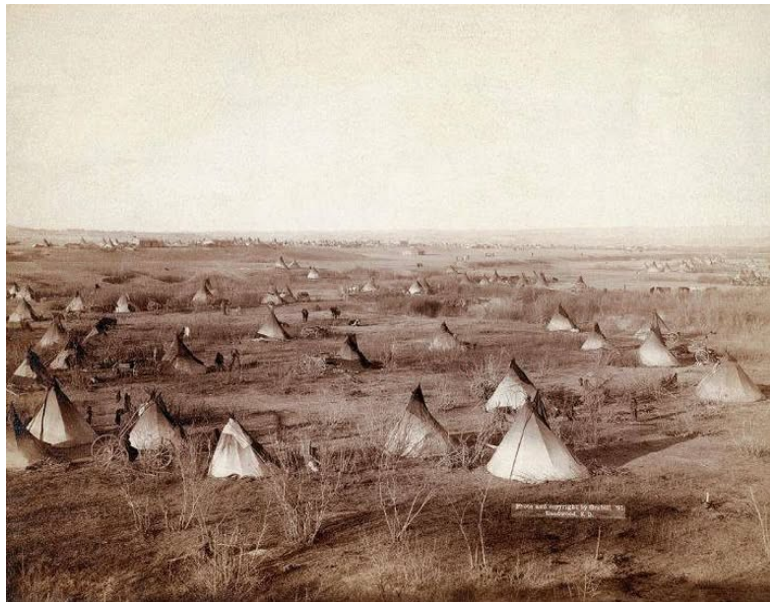




*Please see Marisa before Mass
if you would like to do a Reading*



*The Sioux Nation of Native Americans Teepees
Spread Across the Great Plains in 1800s
(image believed to have been taken in the Dakota Territory)*

*“Perhaps they are not stars,
but rather openings in heaven
where the love of our lost ones
pours through and shines down upon us
to let us know they are happy.”*

~ Eskimo Proverb



***Readings for the Week Beginning
Sunday, December 14, 2025***

<i>Sunday</i>	<i>Isaiah 35: 1-6a, 10 Psalms 146: 6-7, 8-9a, 9bc-10 Second Reading: James 5: 7-10 Alleluia: Isaiah 61: 1 Gospel: Matthew 11: 2-11</i>
<i>Monday</i>	<i>Numbers 24: 2-7, 15-17 Psalms 25: 4-5ab, 6 and 7bc, 8-9 Alleluia: Psalms 85: 8 Gospel: Matthew 21: 23-27</i>
<i>Tuesday</i>	<i>Zephaniah 3: 1-2, 9-13 Psalms 34: 2-3, 6-7, 17-18, 19 and 23 Gospel: Matthew 21: 28-32</i>
<i>Wednesday</i>	<i>Genesis 49: 2, 8-10 Psalms 72: 1-2, 3-4ab, 7-8, 17 Gospel: Matthew 1: 1-17</i>
<i>Thursday</i>	<i>Jeremiah 23: 5-8 Psalms 72: 1-2, 12-13, 18-19 Gospel: Matthew 1: 18-25</i>
<i>Friday</i>	<i>Judges 13: 2-7, 24-25a Psalms 71: 3-4a, 5-6ab, 16-17 Gospel: Luke 1: 5-25</i>
<i>Saturday</i>	<i>Isaiah 7: 10-14 Psalms 24: 1-2, 3-4ab, 5-6 Gospel: Luke 1: 26-38</i>



Pastor

Father Edward J. Cook

Parish Trustees

Michelle LittleBird - Treasurer

Jessica Martinez - Secretary

Elders Council

Sister Margaret, Sister Mark, Garrett LittleBird,

Leonor Rosas, Jennifer Kiokee, Carol Potter,

Liz Sullivan, John and Geri Clifford, Gayle Wilson,

Joe Webster, Dee Loomis, Roberto Cortes, Andrea McKee



1050 W. Lapham Blvd.
Milwaukee, Wisconsin 53204

Contact Information

Parish Phone: 414-672-6989
Siggenauk Center Phone: 414-672-6989
Parish Fax: 414-671-6990
Email: greatspirit59@yahoo.com
Website: www.greatspirit.net

***Sunday Gathering: 9:30am
Sunday Mass Service: 10:00am***

Church Office

1050 W. Lapham Blvd.

Milwaukee, WI 53204

Rectory Hours: Tuesday - Friday; 10am-3pm

Siggenauk Center Food Pantry

Serving Native Americans & 53204 residents

Hours: Thursday: 1:00pm-3:00pm

Friday: 10:00am-12:00 noon



Prayer Group Meeting

Monday: 1pm - ? pm @ Church Hall
Potluck dinner. Bible study and prayer
with emphasis on Native Spirituality.

The Emergency Assistance Food Program is a Federally funded food program, administered through the State of Wisconsin Department of Health Services. The Siggenauk Center Food Pantry is a recipient of this program and distributes TEFAP foods.

Non-discrimination: The Distribution Site hereby agrees that it will comply all State and Federal regulations as outlined in Federal USDA Civil Rights and non Discrimination statement and Wisconsin's discrimination requirements. The distribution site staff and volunteers will complete civil rights training no less than annually for all staff and volunteers that encounter program participants, keeping records as required.



Great Spirit's 36th Annual Anniversary Celebration with Special Guest; Bishop Jeffrey Haines

Sunday, December 21, 2025 / 10am

We are pleased to announce that Bishop Jeffrey Haines will be joining us at Mass for our 36th Annual Birthday / Anniversary Celebration this year, along with a feast immediately afterwards.

*Everyone is invited...
Please share this information
with family and friends...*



***Winter Solstice
December 21, 2025***

***Christmas Eve Mass
December 24, 2025 / 5pm
No Mass Christmas Day***

***New Year's Eve Mass
December 31, 2025 / 5pm
No Mass New Year's Day***





ARCHDIOCESE
of MILWAUKEE



THIS CHRISTMAS, GIVE YOUR SPOUSE THE GIFT OF YOU!

The Marriage Encounter Experience helps you listen, share, and connect more deeply. It's about the two of you learning to be the best, most loving and thriving couple you can be.



Scan the QR
code for more
information!

wwme.org

Unwrap the gifts in your marriage on the next Worldwide Marriage Encounter. Worldwide Marriage Encounter has all the tools you need for a great marriage. Sign up today to attend a Worldwide Marriage Encounter Experience.

Early registration is highly recommended.

For more information, visit our website at wwme.org or call (888) 574-5653..



On The Lighter Side

*Brain cells die, skin cells die, even hair cells die..
but fat cells must have accepted Jesus Christ as their
Lord and Savior because they seem to have eternal life...*

*My neighbors listen to good music
whether they like it or not!*

*All my passwords
are protected by amnesia...*

*I do this thing called
"Whatever I want!"*

*Do you have any idea
who I think I am?*

*I can hear you.
I'm just not listening...*

