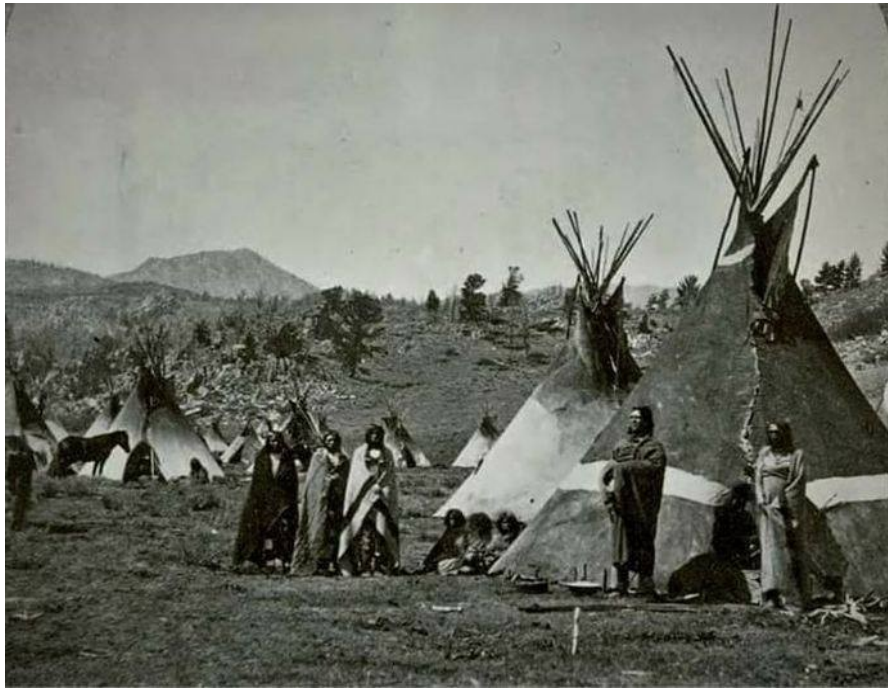




*Please see Marisa before Mass
if you would like to do a Reading*



Shoshone, 1880

*The Shoshone are an Indigenous tribe, who originated in the western
Great Basin and spread north and east into present-day
Idaho and Wyoming.*

*By 1500, some Eastern Shoshone had crossed the
Rocky Mountains into the Great Plains...*

*“Every problem or difficulty you face
contains the seed of an equal
greater advantage or benefit.”*

-Napoleon Hill-



Readings for the Week Beginning Sunday, January 11, 2026

Sunday
Isaiah 42: 1-4, 6-7
Psalms 29: 1-2, 3-4, 9-10
Second Reading: Acts 10: 34-38
Alleluia: Mark 9: 7
Gospel: Matthew 3: 13-17

Monday
First Samuel 1: 1-8
Psalms 116: 12-13, 14-16, 18-19
Alleluia: Mark 1: 15
Gospel: Mark 1: 14-20

Tuesday
First Samuel 1: 9-20
First Samuel 2: 1, 4-5, 6-7, 8abcd
Alleluia: First Thessalonians 2: 13
Gospel: Mark 1: 21-28

Wednesday
First Samuel 3: 1-10, 19-20
Psalms 40: 2 and 5, 7-8a, 8b-9, 10
Alleluia: John 10: 27
Gospel: Mark 1: 29-39

Thursday
First Samuel 4: 1-11
Psalms 44: 10-11, 14-15, 24-25
Alleluia: Matthew 4: 23
Gospel: Mark 1: 40-45

Friday
First Samuel 8: 4-7, 10-22a
Psalms 89: 16-17, 18-19
Alleluia: Luke 7: 16
Gospel: Mark 2: 1-12

Saturday
First Samuel 9: 1-4, 17-19; 10: 1
Psalms 21: 2-3, 4-5, 6-7
Alleluia: Luke 4: 18
Gospel: Mark 2: 13-17



Pastor

Father Edward J. Cook

Parish Trustees

Michelle LittleBird - Treasurer

Jessica Martinez - Secretary

Elders Council

Sister Margaret, Sister Mark, Garrett LittleBird,

Leonor Rosas, Jennifer Kiokee, Carol Potter,

Liz Sullivan, John and Geri Clifford, Gayle Wilson,

Joe Webster, Dee Loomis, Roberto Cortes, Andrea McKee



1050 W. Lapham Blvd.
 Milwaukee, Wisconsin 53204

Contact Information

Parish Phone: 414-672-6989
 Siggenauk Center Phone: 414-672-6989
 Parish Fax: 414-671-6990
 Email: greatspirit59@yahoo.com
 Website: www.greatspirit.net

Sunday Gathering: 9:30am
Sunday Mass Service: 10:00am

Church Office

1050 W. Lapham Blvd.

Milwaukee, WI 53204

Rectory Hours: Tuesday - Friday; 10am-3pm

Siggenauk Center Food Pantry

Serving Native Americans & 53204 residents

Hours: Thursday: 1:00pm-3:00pm

Friday: 10:00am-12:00 noon



Prayer Group Meeting

Monday: 1pm - ? pm @ Church Hall
Potluck dinner. Bible study and prayer
with emphasis on Native Spirituality.

The Emergency Assistance Food Program is a Federally funded food program, administered through the State of Wisconsin Department of Health Services. The Siggenauk Center Food Pantry is a recipient of this program and distributes TEFAP foods.

Non-discrimination: The Distribution Site hereby agrees that it will comply all State and Federal regulations as outlined in Federal USDA Civil Rights and non Discrimination statement and Wisconsin's discrimination requirements. The distribution site staff and volunteers will complete civil rights training no less than annually for all staff and volunteers that encounter program participants, keeping records as required.





10405 W. St. Martins Rd. Franklin, WI 53132

*"The price of anything
is the amount of life you exchange for it."
~ Henry David Thoreau*

*"The most dangerous risk of all -
The risk of spending your life
not doing what you want
on the bet you can buy yourself
the freedom to do it later."*



On the Fighter Side

A man once lent some money to his friend, but the friend later denied receiving it, so the man took him to court.

The judge asked

"Do you have any witnesses?"

The man replied:

"No, I gave him the money in secret."

The judge said:

"Then go to the place where you lent him the money and bring me a handful of soil, so I can question it."

The man was surprised, by this request but obeyed and went to fetch a handful of soil from that spot.

While he was away, the judge turned to the debtor and asked:
"Do you think he's reached the place by now?"

The man quickly replied:

"No, the place is very far from here."

The judge smiled.

"Guilty," he said...

*Maybe it's true, maybe we don't know
what we have until we've lost it.
But maybe it's also true
that we don't know what we're missing
until we find it...*

